



CONCRETE COATINGS^{INC™}

restore • re-invent • revive[™]



Product Catalog



Contents

Acrylic Sealers	2
Other Sealers	3
Shield TM Epoxy Flooring Products	4
Grouts, Mortars and Micro-Toppings	5
Polymers, Modifiers and Bonders	6
C-Series TM Liquid Colorants	7
VIVID TM Acid Stain and QuickDye TM	8
Floor Preparation	9
Stencil Patterns	10
Additional Products	12

About Concrete Coatings, Inc.

Headquartered in Layton, UT, Concrete Coatings, Inc. has been manufacturing high-quality concrete restorative and decorative products since 1996. It has distributors and dealers across the United States and several countries.

In today's world, where consumers seek the best, it's not enough to be a skilled contractor. Your talents and service require the best: the best products and the best support. Our field-experienced technical support and distributor services are second to none. We offer training, demonstrations and service, so you can use our products with confidence.

SuperSeal™

SuperSeal™ 2000 Solvent-Based 600, 400, 350 and 100 VOC

An aromatic sealer that can be applied to almost any surface: concrete, tile, cementitious overlays and much more. Available in low VOC solutions as well. Not for use in California.

Available in Gloss and Matte finishes in gallon, 5-gallon and 55-gallon sizes.

Coverage: 150-200ft²/gal

Product Codes:

Gloss Finish: S-2000-1, S-2000-5, S-2000-55

Matte Finish: S-2000-1-M, S-2000-5-M, S-2000-55-M



SuperSeal™ 20WB Water-Based Low VOC

A water-based acrylic sealer for everyday use. Should be used when a solvent-based product cannot due to safety or flammability concerns. May be used as a primer for SuperGlaze™ WBU

Available in a Satin finish in gallon, 5-gallon and 55-gallon sizes.

Coverage: 300-400ft²/gal

Product Codes:

S-20WB-1, S-20WB-5, S-20WB-55



PS-18™ Solvent-Based 600, 400, 350 and 100 VOC

PS-18™ is a non-yellowing, solvent-based sealer that aids in the curing process of freshly placed concrete. Unlike traditional curing and sealing agents, which are meant as sacrificial coats and must be removed before application of a finish sealer, PS-18™ is fully compatible with SuperSeal™ 2000 and Gem-Kote™ sealers.

Available in Gloss and Matte finishes in gallon, 5-gallon and 55-gallon sizes. Coverage: 150-200ft²/gal

Product Codes:

Gloss Finish: PS-650-1, PS-650-5, PS-650-55, PS-400-1, PS-400-5, PS-400-55, PS-100-1, PS-100-5, PS-100-55

GemKote™

GemKote™ 400, 350 and 100 Solvent-Based 400, 350 and 100 VOC

Made with the same resins as SuperSeal™ 2000, but formulated to meet VOC requirements in specific areas of the country. For use primarily in California.

Available in Gloss and Matte finishes in gallon, 5-gallon and 55-gallon sizes.

Coverage: 150-200ft²/gal

Product Codes:

S-400-1, S-350-1, S-100-1, S-400-5, S-350-5, S-100-5, S-400-55, S-350-55, S-100-55



Water-Based Sealers and Topcoats

SuperGlaze™ WBU Water-Based Urethane

A single- or dual-component water-based urethane for commercial or residential application. Low VOC content and quick drying. **NOT SUITABLE FOR VEHICULAR TRAFFIC.** Use in conjunction with Q43 for added durability and resistance.

Available in a Gloss finish in gallon, 5-gallon and 55-gallon sizes.

Coverage: 300-400ft²/gal

Product Codes:

SG-WBU-1, SG-WBU-5, SG-WBU-55



DuraWax™ Acrylic Floor Wax

UV-stable acrylic wax to be used as a sacrificial coat over any sealed interior surface. Apply 100 or more times before needing to strip.

Mimics the sheen over which it is applied. Available in gallon and 5-gallon sizes.

Coverage: 1,000-3,000ft²/gal

Product Codes:

S-DWAX-1, S-DWAX-5, S-DWAX-55

Dri-Look™ Masonry Sealer

Designed for brick and manufactured stone to provide an invisible barrier against water and the elements, yet leave the natural look of these surfaces with no visible sheen. For vertical surfaces only.

Available in a Natural finish in gallon, 5-gallon and 55-gallon sizes.

Coverage: 600ft²/gal (sprayed)

Product Codes:

DRILK-1, DRILK-5, DRILK-55



Tile and Grout Sealers

TileArmor™ Tile and Grout Sealers

Penetrating sealers formulated to provide excellent stain protection. The enhancer is solvent-based and deepens the natural colors of the stone and tile. Tile armor WB is a completely natural finish. Both products may be used as a pre-grouting sealer over clean tile surfaces before grouting. Sold in cases.

Coverage: Varies. Check specific product data for more detailed coverage.

Product Codes:

Solvent-Based: TILEENHANCER-P, TILEENHANCER-Q, TILEENHANCER-G

Water-Based: TILEARMOR-P, TILEARMOR-Q, TILEARMOR-G



Flooring Epoxies

Shield™ 50

This 100% solids and 100% cross-linked epoxy is great as a primer for UV Shield™ and works well as a stand-alone product. Available in straw or pigmented in 1-Gal, 3-Gal, 5-Gal and 15-Gal kits.

Coverage: 150-200ft²/gal

Product Codes:

Straw: EP-S50-1, EP-S50-3, EP-S50-5, EP-S50-15

Pigmented: EP-S50-1-XX, EP-S50-3-XX, EP-S50-5-XX, EP-S50-15-XX



UV Shield™

Use this 100% solids, 100% cross-linked UV resistant epoxy as a topcoat over Shield™ 50. Also works as an excellent topcoat over almost any interior project. Available clear or pigmented in 1-Gal, 3-Gal, 5-Gal and 15-Gal kits.

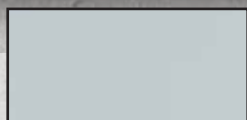
Coverage: 100-200ft²/gal

Product Codes:

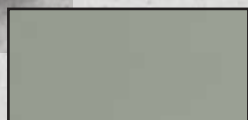
Clear: EP-UVC-1, EP-UVC-3, EP-UVC-5, EP-UVC-15

Pigmented: EP-UVC-1-XX, EP-UVC-3-XX, EP-UVC-5-XX, EP-UVC-15-XX

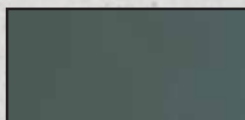
Pigment Colors



Concrete Gray **CG**



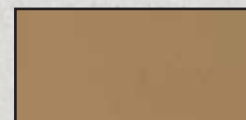
Medium Gray **MG**



Dark Gray **DG**



Tan **TN**



Sand Beige **SB**

Acrylic Flakes



Blue Blend **EP-FLK-110, EP-FLK-150**



Sahara Blend **EP-FLK-410, EP-FLK-450**



Gray Blend **EP-FLK-210, EP-FLK-250**



B&W Blend **EP-FLK-510, EP-FLK-550**



Beige Blend **EP-FLK-310, EP-FLK-350**



Brown Blend **EP-FLK-610, EP-FLK-650**

Colored Quartz



Red Blend **EP-QTZ150**



Mocha Blend **EP-QTZ450**



Gray Blend **EP-QTZ250**



Natural Blue Blend **EP-QTZ550**



Cream Blend **EP-QTZ350**



Brown Blend **EP-QTZ650**

Grouts, Mortars and Microtoppings



Overlay Grouts and Mortars

G-100 Professional Series Grout™

Our standard general purpose overlay mix. Combine with DuraSet™ 1000 and/or 1001 for use in our Spray-Tek™ acrylic overlay. Can also be troweled. Recommended for applications 1/4" or less. Available in 50lb bags. 60 bags per pallet. *Coverage: 100-200ft²/bag* **Product Code: G-100**



Fast-Patch™ High-Density Rapid-Setting Repair Mortar

A fast-setting repair mortar that can be applied from a feathered edge to 12" or more. Cures to approx. 7,000psi. Great for repairing small chips to large holes.

Available in 50lb bags. 60 bags per pallet.

Coverage: 25ft²/bag at 1/4" **Product Code: FP-1060**



Stamp-Tek™ Stampable Overlay

Stamp-Tek™ overlay is an add-water-only product designed to accept 1/4", 1/2" and 3/4" impressions. Fiber has been added for durability. DuraSet™ VAE is required as a primer.

Available in Gray 50lb bags. 60 bags per pallet.

Coverage: 100-200ft²/bag **Product Code: G-100**



Broom-Tek™ Broomable Overlay

Broom-Tek™ is specifically designed as an overlayment for any concrete surface, providing an economical way to resurface and beautify old, chipped, spalled, or scaled concrete.

Available in 50lb kits. Kit includes 40lb bag of Broom-Tek™ Grout mix and 1 gallon DuraSet 2000.

Coverage: About 100ft²/kit **Product Code: BT-KIT**



Microtoppings

Micro-Tek™ RG Rough Grade Microtopping

This just-add-water mix is designed as a primer for Micro-Tek™ SG. Must be applied with a squeegee or trowel. May be used to fill holes up to 1/4" thick. For interior or exterior use.

Available in Natural 50lb bags. 60 bags per pallet. *Coverage: 200ft²/bag*

Product Code: MT-RG-N



Micro-Tek™ SG Smooth Grade Microtopping

Micro-Tek™ SG is a just-add-water mix designed to be applied over Micro-Tek RG. Available in white or gray, this overlay accepts stains and dyes and mimics a tightly power-troweled surface. Apply with a squeegee or trowel. Recommended interior use only due to slip hazard. Available in Gray or White 40lb bags. 60 bags per pallet.

Coverage: 200ft²/bag for first coat, 400-600ft²/bag subsequent coats

Product Codes: MT-SG-W, MT-SG-N



Polymers and Modifiers

DuraSet™ 1000 and 1001 *Acrylic Modifier for G-100™*

Premixed polymer designed to be used exclusively with G-100™. DuraSet™ 1001 may be mixed in at any ratio to speed up dry time. Consider using FastSet when temperatures are at or below 65°F.

Available in 2-gallon, 5-gallon and 55-gallon sizes.

Coverage: About 80ft²/gal

Product Codes:

DuraSet 1000: M-1000-2, M-1000-5, M-1000-55

DuraSet 1001 *FastSet*: M-1001-2, M-1001-5, M-1001-55



DuraSet™ 2000 *Exclusively for Broom-Tek™*

Premixed polymer used exclusively with Broom-Tek™. Included in the Broom-Tek™ Kit or sold separately for large jobs.

Coverage: About 100ft²/gal

Product Code:

M-2000-1

Binders

DuraSet™ VAE *Primer for Stamp-Tek™*

Primer formulated exclusively for use with Stamp-Tek™ Stampable Overlay. Apply to concrete and allow to dry before placing Stamp-Tek™ Stampable Overlay. Will only re-emulsify once. If DuraSet™ VAE gets wet before placement of Stamp-Tek™ Stampable Overlay, DuraSet™ VAE must be reapplied.

Available in gallon, 5-gallon and 55-gallon sizes.

Coverage: 200-300ft²/gal

Product Code:

M-VAE-1, M-VAE-5, M-VAE-55

DuraSeam™ *Elastomeric Membrane*

An elastomeric membrane to be used on countertop seams prior to applying the GraniteLook™ system. May also be used after repairing a crack in concrete to discourage telescoping.

Available in gallon and 5-gallon sizes.

Coverage: Varies based on application

Product Codes:

DS-1, DS-5

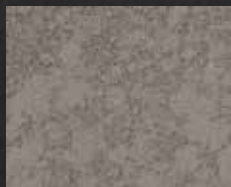
Integral Colorants



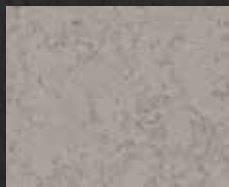
C-Series™ Liquid Colorants



C-109 Oxford Gray



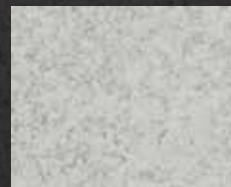
C-108 Dark Gray



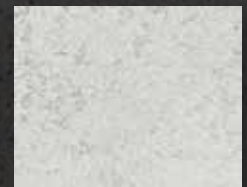
C-127 Noble Gray



C-110 Light Oxford Gray



C-107 Platinum Gray



C-106 Natural Gray



C-123 Terra



C-103 Burnt Sienna



C-122 Sahara



C-117 Salmon



C-124 Sandy Beige



C-118 Coral



C-111 Chocolate



C-112 Brown



C-113 Desert Beige



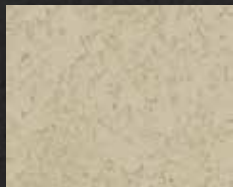
C-126 Mocha



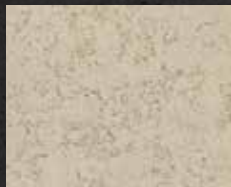
C-120 Wheat



C-102 Sand



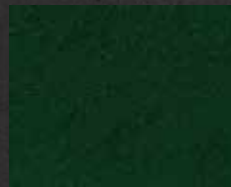
C-119 Almond



C-125 Putty



C-101 Antique White



C-114 Forest Green



C-115 Bright Blue



C-116 Bright Red

28 Standard Colors

C-Series™ Liquid Colorants come in 28 standard colors, or can be custom colored for an additional charge.

They are formulated to work with all Concrete Coatings cementitious overlays.

Colors not shown are Macadamia, Black, White, and Green.

This color chart is a representation only and does not guarantee that the final color will be an exact match. The colors produced will rely heavily on skill, practice, and experimentation. Application methods and age of the concrete will result in different tones. Even in a controlled environment, cements, aggregates, water content and curing methods will contribute to different results. Concrete Coatings Inc. recommends that any changes be made to the acrylic cement overlay prior to sealing.

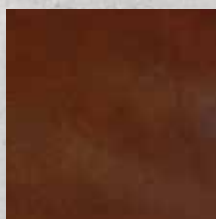
VIVID™ Acid Stains



Ebony
CS-600



Walnut
CS-1000



Mission Brown
CS-700



Coffee
CS-300



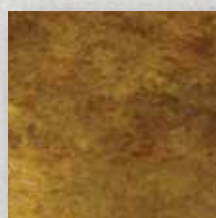
Mahogany
CS-500



Weathered Terracotta
CS-1100



Caramel
CS-400



Amber
CS-800



Olive
CS-900

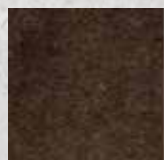


Jade
CS-100

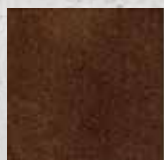


Turquoise
CS-200

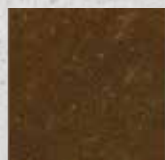
QuickDye™



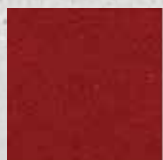
Ebony
QD-600



Walnut
QD-1000



Mission Brown
QD-700



Sepia
QD-2500



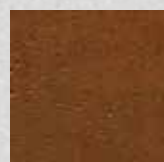
Terracotta
QD-2700



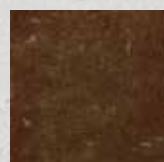
Maroon
QD-2000



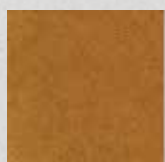
Chestnut
QD-1400



Coffee
QD-300



Mahogany
QD-500



Weathered Terracotta
QD-1100



Burnt Sienna
QD-1200



Gold
QD-1800



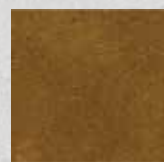
Sand
QD-2400



Chocolate
QD-1500



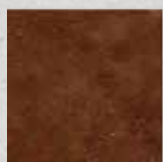
Caramel
QD-400



Amber
QD-800



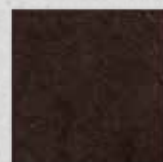
Olive
QD-900



Saddle Brown
QD-2300



Eggplant
QD-1600



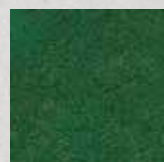
Black
QD-1000



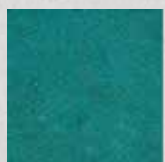
Midnight Black
QD-2100



Green
QD-1900



Jade
QD-100



Turquoise
QD-200



Blue
QD-3000



Slate Blue
QD-2600



Forest Green
QD-1700



Pine Green
QD-2200

These color charts are a representation only and do not guarantee that the final color will be an exact match or even reasonably close to the sample. The colors produced will rely heavily on skill, practice and experimentation. Each concrete slab will react differently. Application methods and age of the concrete will result in different tones or hues and in the case of very old concrete, the stain/dye may have little or no reaction. Even in a controlled environment, cements, aggregates, water content, and concrete curing methods will contribute to different results. Test sections should be done to verify suitability and appearance prior to application. When using multiple bottles of stain or dye of the same color, mix bottles of stain or dye together.

Prep and Clean

EZ -Prep™ Etch, Clean and Degrease

Use to etch, clean, degrease and remove rust from concrete. Use 10:1 prior to acid staining. Use 5:1 prior to resealing and use undiluted to etch concrete prior to placing an overlay or to remove heavy stains. Light, clean odor; non-reactive to skin and steel.

Available in a gallon size.

Coverage: *Varies based on application*

Product Code:

SP-EZP-1



EZ-Clean™ Neutralize and Clean

Use as a neutralizer and light cleaner. Use after staining to neutralize and remove residue. Use any other time a light cleaner is needed. Available in concentrate and ready-to-use formulas.

Available in Ready-to-Use Gallon and Concentrate gallon sizes.

Coverage: *Varies based on application*

Product Codes:

Ready-to-Use: SP-EZR-1

Concentrate: SP-EZC-1



Clean and Repair

Efflorescence Remover Concrete Cleaner

Efflorescence Remover is a safer product for use in cleaning concrete surfaces than muriatic acid. It is perfect for the removal of excess antique release or the removal of efflorescence.

Available in gallon and 5-gallon sizes.

Coverage: 100-400ft²/gal

Product Codes: EC-1, EC-5



CR-204™ Epoxy Crack Repair

A user-friendly, high-strength epoxy designed specifically for small- to medium-sized cracks. Its medium viscosity, moisture insensitivity and low modulus provides an excellent adhesion to the walls of voids.

Available in a gallon kit.

Coverage: *Varies. Check specific product data for more detailed coverage.*

Product Code: CR-204-G





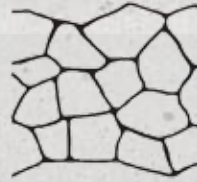
Full Size Stencils



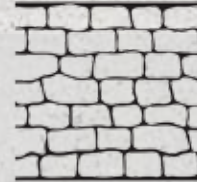
LARGE KEYSTONE
LARGEST STONE SIZE: 12" X 10"
ROLL WIDTH: 35" JOINT WIDTH: $\frac{1}{2}$ " - 1"



BUSHROCK
AVERAGE STONE SIZE: 16" X 10"
ROLL WIDTH: 36" JOINT WIDTH: $\frac{1}{2}$ "



FLAGSTONE
LARGEST STONE SIZE: 14" X 11"
ROLL WIDTH: 32" JOINT WIDTH: $\frac{1}{2}$ " - 1 $\frac{1}{2}$ "



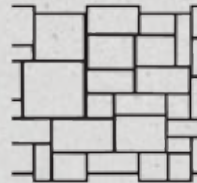
ANTIQUE COLONIAL
AVERAGE BRICK SIZE: 5 $\frac{1}{2}$ " X 13 $\frac{1}{2}$ "
ROLL WIDTH: 36" JOINT WIDTH: $\frac{1}{2}$ " - 1"



KEYSTONE
LARGEST STONE SIZE: 11" X 8"
ROLL WIDTH: 33" JOINT WIDTH: $\frac{1}{2}$ " - 1 $\frac{1}{2}$ "



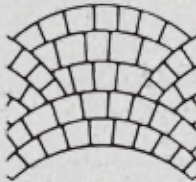
RUSTIC ASHLAR
LARGEST STONE SIZE: 12" X 10"
ROLL WIDTH: 35" JOINT WIDTH: $\frac{1}{2}$ " - 1"



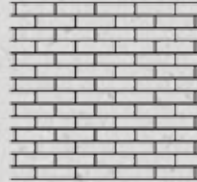
ASHLAR TILE
LARGEST TILE SIZE: 12 $\frac{1}{2}$ " X 11 $\frac{1}{2}$ "
ROLL WIDTH: 37" JOINT WIDTH: $\frac{1}{2}$ " - 1"



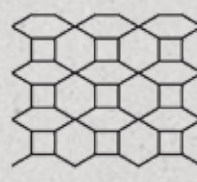
ENGLISH COBBLE
AVERAGE BRICK SIZE: 11 $\frac{1}{2}$ " X 4"
ROLL WIDTH: 32" JOINT WIDTH: $\frac{1}{2}$ " - 1"



EUROPEAN FAN
BRICK SIZE: RANDOM
ROLL WIDTH: 33" JOINT WIDTH: $\frac{1}{2}$ " - $\frac{3}{4}$ "



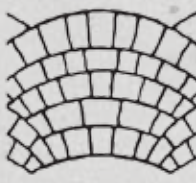
FACE BRICK
BRICK SIZE: 2 $\frac{1}{2}$ " X 7 $\frac{1}{2}$ "
ROLL WIDTH: 36 $\frac{1}{2}$ " JOINT WIDTH: $\frac{1}{16}$ "



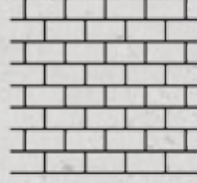
MEDITERRANEAN
OCTAGON: 21" X 13 $\frac{1}{2}$ "
ROLL WIDTH: 32" JOINT WIDTH: $\frac{1}{2}$ "



RIVERSTONE
AVERAGE STONE SIZE: 13" X 9"
ROLL WIDTH: 35" JOINT WIDTH: $\frac{1}{2}$ " - 3"



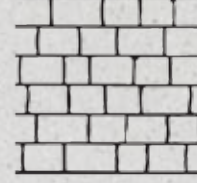
COBBLE FAN
BRICK SIZE: RANDOM
ROLL WIDTH: 34" JOINT WIDTH: $\frac{1}{2}$ " - $\frac{3}{4}$ "



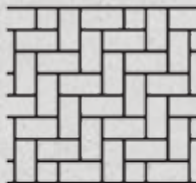
RUNNING BOND
BRICK SIZE: 4" X 7 $\frac{1}{2}$ "
ROLL WIDTH: 36 $\frac{1}{2}$ " JOINT WIDTH: $\frac{1}{2}$ "



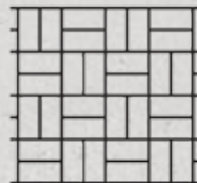
10" OCTAGON TILE
OCTAGON DIAMETER: 10 $\frac{1}{2}$ "
ROLL WIDTH: 33 $\frac{1}{2}$ " JOINT WIDTH: $\frac{1}{16}$ "



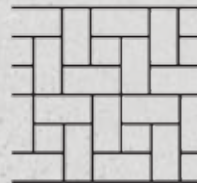
ROMAN PAVER
AVERAGE BRICK SIZE: 10" X 5 $\frac{1}{2}$ "
ROLL WIDTH: 34" JOINT WIDTH: $\frac{1}{2}$ "



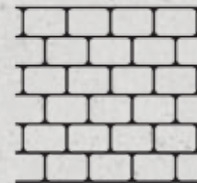
ORIGINAL HERRINGBONE
BRICK SIZE: 3 $\frac{1}{2}$ " X 7 $\frac{1}{2}$ "
ROLL WIDTH: 33 $\frac{1}{2}$ " JOINT WIDTH: $\frac{1}{2}$ "



BASKET WEAVE
BRICK SIZE: 3 $\frac{1}{2}$ " X 7 $\frac{1}{2}$ "
ROLL WIDTH: 33 $\frac{1}{2}$ " JOINT WIDTH: $\frac{1}{2}$ "



FLANDERS WEAVE
FULL BRICK SIZE: 4 $\frac{1}{2}$ " X 10 $\frac{1}{2}$ "
ROLL WIDTH: 33" JOINT WIDTH: $\frac{1}{2}$ "



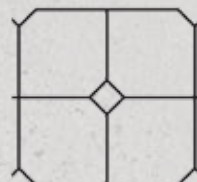
COBBLESTONE
BRICK SIZE: 4 $\frac{1}{2}$ " X 7 $\frac{1}{2}$ "
ROLL WIDTH: 33" JOINT WIDTH: $\frac{1}{2}$ "



MEDIUM TILE
TILE SIZE: 7 $\frac{1}{2}$ " X 7 $\frac{1}{2}$ "
ROLL WIDTH: 33 $\frac{1}{2}$ " JOINT WIDTH: $\frac{1}{2}$ "



LARGE TILE
TILE SIZE: 10 $\frac{1}{2}$ " X 10 $\frac{1}{2}$ "
ROLL WIDTH: 33 $\frac{1}{2}$ " JOINT WIDTH: $\frac{1}{2}$ "



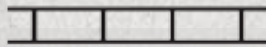
16-INCH DIAMOND TILE
LG. TILE SIZE: 16" X 16" INNER TILE: 4" X 4"
ROLL WIDTH: 33 $\frac{1}{2}$ " JOINT WIDTH: $\frac{1}{2}$ "



COBBLEBRICK
AVERAGE BRICK SIZE: 5 $\frac{1}{2}$ " X 8 $\frac{1}{2}$ "
ROLL WIDTH: 37" JOINT WIDTH: $\frac{1}{2}$ " - $\frac{3}{4}$ "

AVAILABLE IN 1000 SQ. FT. & 500 SQ. FT. BOXES

Headers and Insets



EDGE BRICK HEADER
BRICK SIZE: 4 1/2" X 8 1/4"
ROLL WIDTH: 5 1/2" JOINT WIDTH: 1/2"



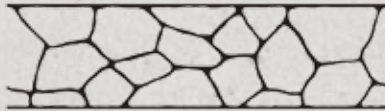
BRICK HEADER
BRICK SIZE: 3 1/2" X 7 1/2"
ROLL WIDTH: 8 1/4" JOINT WIDTH: 1/2"



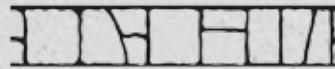
COBBLE HEADER
BRICK SIZE: 4 1/2" X 7 1/2"
ROLL WIDTH: 8 1/2" JOINT WIDTH: 1/2"



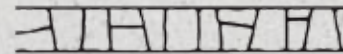
HERRINGBONE HEADER
BRICK SIZE: 3 1/2" X 7 1/2"
ROLL WIDTH: 8 1/4" JOINT WIDTH: 1/2"



18-INCH FLAGSTONE BORDER
STONE SIZE: RANDOM
ROLL WIDTH: 18" JOINT WIDTH: 1/2"



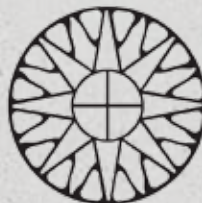
BUSHROCK HEADER
STONE SIZE: RANDOM
ROLL WIDTH: 11 1/4" JOINT WIDTH: 1/2"



KEYSTONE HEADER
STONE SIZE: RANDOM
ROLL WIDTH: 8 1/2" JOINT WIDTH: 1/2"

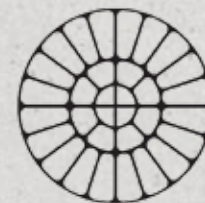


SMALL BRICK ROSETTE
DIAMETER: 2' 11 1/2"
JOINT WIDTH: 1/2"

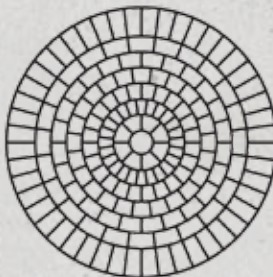


INCA SUN
DIAMETER: 2' 11 1/2"
JOINT WIDTH: 1/2"

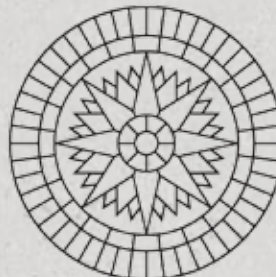
*CENTER JOINTS MAY BE REMOVED
FOR A SINGLE CIRCULAR STONE OR
RETAINED FOR A TIED EFFECT



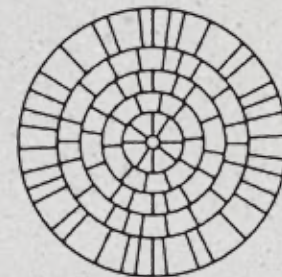
UNIVERSAL CIRCLE
DIAMETER: 2' 11 1/2"
JOINT WIDTH: 1/2"



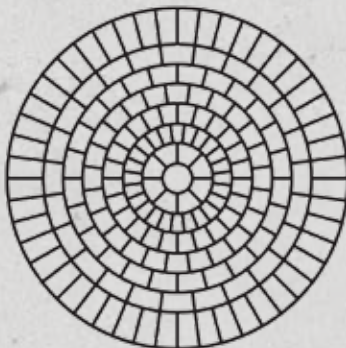
BRICK ROSETTE
DIAMETER: 5' 5 1/2"
JOINT WIDTH: 1/2"



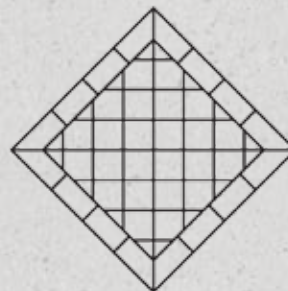
COMPASS
DIAMETER: 5' 5" JOINT WIDTH: 1/2"
DETACHABLE LETTERS INCLUDED (N, S, E, W)



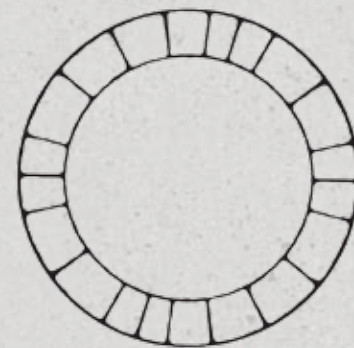
COBBLE CIRCLE
DIAMETER: 5' 5"
JOINT WIDTH: 1/2"



LARGE BRICK ROSETTE
DIAMETER: 7' 2"
JOINT WIDTH: 1/2"



DIAMOND
OVERALL SIZE: 5' 2" TIP TO TIP
TILE SIZE: 6"
JOINT WIDTH: 1/2"



COBBLE CIRCLE RING
DIAMETER: 7' 2"
JOINT WIDTH: 1/2"

CUSTOM-CUT STENCILS AVAILABLE IN PAPER and VINYL
DECORATIVE BORDERS, CORNER ACCENTS, COMPANY LOGOS,
FAMILY CRESTS, MONOGRAMS and more

Additional Products

GraniteLook™ *Faux Granite Look*

Available in a kit that includes material to complete a 60ft² countertop or as a standalone liquid to mix with our C-Series™ liquid colorants, this system may be applied over wood and faux finished to look like granite for interior countertops or over concrete for flooring or exterior projects. Sealer is not included. A high quality topical sealer like UV Shield™ is recommended. *Coverage: About 60ft²/kit*

Product Codes:

GraniteLook Kit: GL_KIT

GraniteLook: GL-1



Stamp-Tek™ *Liquid Release*

Solvent-based release designed for use with decorative concrete stamps. Scented like bubblegum, Stamp-Tek™ Liquid Release is a classic. It's a great bond-breaker that evaporates quickly.

Available in gallon, 5-gallon and 55-gallon sizes.

Coverage: 150-200ft²/gal

Product Codes:

LR-1, LR-5, LR-55

SlipGrip™ *Slip Resistant Additive*

This additive is designed to be added to our solvent-based sealers only. Add this to one or all coats of sealer depending on the desired level of traction control.

Available in 1 pound containers. Add 1 pound per 5-gallon pail of sealer.

Coverage: 150-200ft²/gal

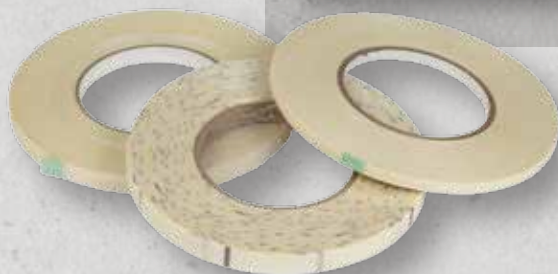
Product Code:

SLIPGRIP



Pattern Tape

Pattern Tape *Filament Tape*



Specially-designed tape to be used primarily with the Spray-Tek™ and Micro-Tek™ systems. Use this tape to lay out any pattern you desire. All rolls are 60 yards long and come in widths of ¼", ⅜", ½" and ¾".

Product Codes:

Unmarked: T-P14, T-P38, T-P12, T-P34

Pre-marked: T-PM12

Additional Products



Tools and Samples

Power and Hand Tools

We provide a variety of both power tools and hand tools for your convenience. For an updated list of all tools available, please contact your sales representative or consult your most recent pricing list.



Preval and Re-Grip Products

We are a master distributor of both Preval and Re-Grip Products. Contact your sales representative for a complete list of these amazing products!



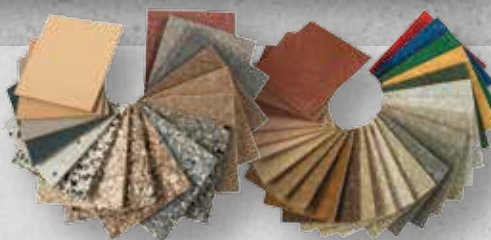
PREVAL



re-grip

Various Samples

Most of our products are available to purchase in sample sizes, allowing you and your customer to get familiar with the products and how they work. Particularly useful with VIVID™ Acid Stains and the various sealers. Finished samples also available.



Training and Support

Corporate Training and Support

Our expertise is not only in making the products, but in their installation. Our training seminars are held every quarter, and are inclusive of all aspects of coating installation, marketing and sales. We will show you what it takes to prepare a surface, install the coating and maintain it to provide years of trouble-free service. We have one of the most comprehensive training courses in the country, and teach virtually all aspects to the potential installer.

We can also coordinate an on-site demonstration with your sales people. Contact your sales representative for more information.



Toll-Free 800-443-2871 • Fax 801-544-2896
www.concretecoatingsinc.com



CONCRETE COATINGS INC

restore • re-invent • revive

