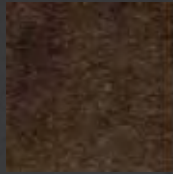


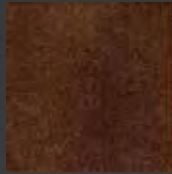


Available Colors

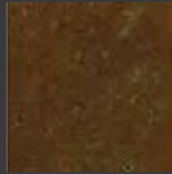
VIVIDTM Acid Stain Touch Up Colors



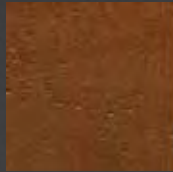
Ebony
QD-600



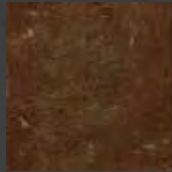
Walnut
QD-1000



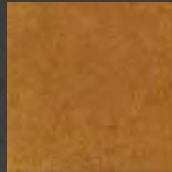
Mission Brown
QD-700



Coffee
QD-300



Mahogany
QD-500



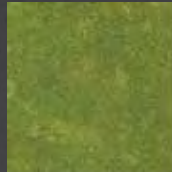
Weathered Terracotta
QD-1100



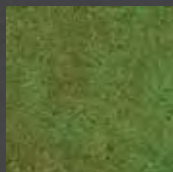
Caramel
QD-400



Amber
QD-800



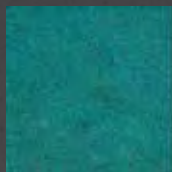
Olive
QD-900



Green
QD-1900

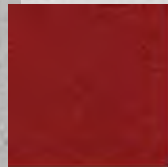


Jade
QD-100

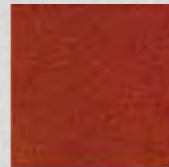


Turquoise
QD-200

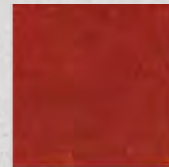
Additional Colors



Sepia
QD-2500



Terracotta
QD-2700



Maroon
QD-2000



Chestnut
QD-1400



Burnt Sienna
QD-1200



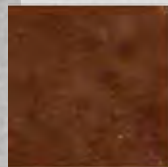
Gold
QD-1800



Sand
QD-2400



Chocolate
QD-1500



Saddle Brown
QD-2300



Eggplant
QD-1600



Black
QD-1000



Midnight Black
QD-2100



Blue
QD-1100



Slate Blue
QD-2600



Forest Green
QD-1700

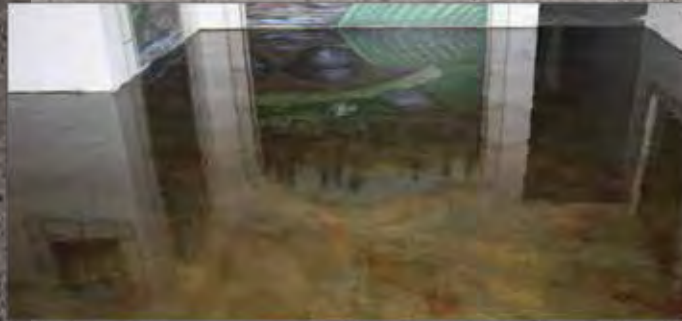


Pine Green
QD-2200

This color chart is a representation only and does not guarantee that the final color will be an exact match or even reasonably close to the sample. The colors produced will rely heavily on skill, practice and experimentation. Each concrete slab will react differently. Application methods and age of the concrete will result in different tones or hues. Even in a controlled environment, cements, aggregates, water content, and concrete curing methods will contribute to different results. Test sections should be done to verify suitability and appearance prior to application.

Features:

- Easy to Apply and Maintain
- Large Variety of Colors
- Unlimited Shelf Life
- Interior Use Only



Application Methods

Coverage

One gallon will cover approximately 400-600 square feet, depending on saturation. Avoid puddling for maximum coverage. Mix one eight-ounce bottle of QuickDye™ to one gallon of acetone. Add four ounces of penetrating additive for every gallon of pre-mixed QuickDye™ and acetone. Penetrating agent available in twenty-ounce bottles.

Equipment and Supplies

Acetone compatible sprayer, one gallon of acetone, carbon filter respirator, eye protection, chemical resistant gloves, water, floor buffer with white pad, clean rags, mop and dry vacuum.

Concrete Preparation and Evaluation

All concrete should be fully cured (28 days.) Concrete must be free of sealers, paint, oil, mastic, or anything that would interfere with the reaction of the stain. The subsurface should be well drained to avoid hydrostatic pressure. Floor moisture should be evaluated.

If the concrete surface shows signs of dark moisture and/or alkali spotting, scrub with a light detergent or TSP and rinse well. Mop all residue from the floor until rinse water remains mostly clear. Do not use muriatic (hydrochloric) acid or pressure washer when cleaning the floor prior to application. Concrete must be clean and dry before applying QuickDye™.

Always apply dye in a small test area to confirm color and to determine concrete porosity. Protect surrounding areas with plastic or masking before QuickDye™ application.

Flammability Warning

It is important to note that when QuickDye™ is mixed with acetone, it produces vapors that are highly flammable and may cause flash fires. Do not breath vapors. Acetone can be harmful if inhaled. Use only with adequate ventilation. Open windows and use fans to achieve air movement. Nonexplosive exhaust devices may be required in large areas with poor ventilation. Use only NIOSH or MSHA approved atmosphere supplying or air purifying respirators in confined or enclosed spaces for organic vapors. Make certain no source of open flame is present including but not limited to pilot lights, heaters, cigarettes and electric tools.

Mixing

QuickDye™ is packaged in a powder form and must be mixed with acetone. Follow acetone manufacturer's instructions and Material Safety Data Sheet for safe handling. Empty the QuickDye™ powder bottle into the acetone container. Close the container and shake well for 30 seconds. Allow the powder to dissolve for three hours before using. Add four ounces of penetrating additive for every gallon of pre-mixed dye and acetone, if desired. This will extend the amount of time that QuickDye™ penetrates the concrete before the reaction is completed between the dye and acetone. Use of the penetrating agent is advised on all jobs except on extremely porous concrete or when applying dye around stencils.

Application

Using an acetone pump sprayer, spray material evenly and continuously in a circular motion, avoiding puddles. Mop up excess so the entire surface will dry evenly. Avoid tracking the dye to surrounding areas. Allow the product to dry thoroughly, which generally occurs after 1 minute.

Cleaning

Remove all residue with a white pad attached to a floor buffer. If residue is not removed, it will act as a bond breaker between the dye and sealer.

Sealing

After the concrete surface is clean and dry, sealer may be applied. It is recommended that sealer be sprayed. If a roller is used, be careful to not overwork the sealer or epoxy as it may pull the QuickDye™ up and into lighter colors. Choose Concrete Coatings, Inc. SuperSeal™ 2000, GemKote™ 400, 350 or 100, SuperGlaze™ WBU, SuperSeal™ 20WB or any other suitable sealer depending on your desired look and area usage requirements. Water-based sealers or clear coat epoxies are generally used indoors. Always apply several coats of DuraWax™ over your choice of sealer to provide a sacrificial layer. This provides for easy floor maintenance. Please contact Concrete Coatings, Inc. to determine the best sealer for your particular needs.

Warranty

This product is intended for use by licensed contractors and installers, knowledgeable and trained in the use of these products. It is warranted to be of uniform quality, within manufacturing tolerances. The manufacturer, Concrete Coatings Inc., has no control over the use of this product, therefore, no warranty, expressed or implied, is or can be made either as to the effects or as results of such use. Product proved to be defective will be replaced at manufacturer's discretion. The end user shall be responsible for determining product's suitability and assumes all risks and liability. There are no other warranties by Concrete Coatings Inc. of any nature, expressed or implied, including any warranty of merchantability or fitness for a particular purpose in connection with this product. Concrete Coatings Inc. shall not be liable for damages of any sort, including remote or consequential damages, resulting from the use of this product or any claimed breach of warranty, whether expressed or implied, from any other cause whatsoever. Concrete Coatings Inc. will not be responsible for use of this product in a manner to infringe on any patent held by others.

Caution: Keep Out of Reach of Children

Before using or handling, read the Material Safety Data Sheet, Technical Data Sheet and Warranty. **DO NOT TAKE INTERNALLY!** Avoid contact with skin and eyes. Use only with adequate ventilation and use a respirator when levels are above application limits.